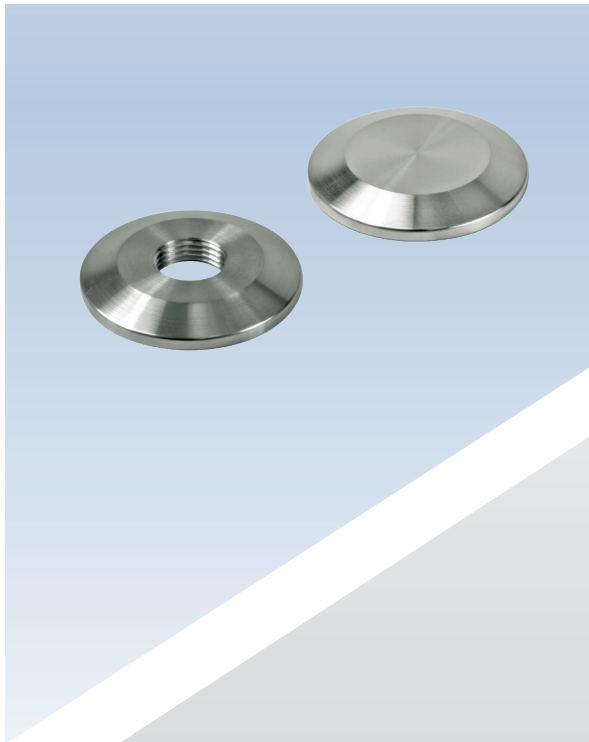





BLANK AND THREADED CAPS

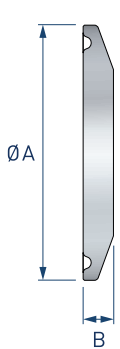


CAPS

Blank caps are manufactured from 316L stainless steel with the wetted face finished to 0.5 microns Ra.

Threaded blank caps - Where blank caps are to be fitted with a thermocouple or other similar device they can be supplied with a BSP female threaded port.

 Connections	To suit 1/2" - 10" ASME BPE clamp fittings
 Material	316L stainless steel
 Surface Finish	Wetted surfaces - 0.5 microns Ra (SF1) External surfaces - 0.8 microns Ra
 Options	ISO and DIN clamp sizes Low ferrite stainless steel (WN1.4435), C22 and other alloys Pull-tab version Electropolished finish (SF4)
 Certification	Certificate of conformity Material certification Certified 'Animal derived ingredient' free

Blank and Threaded Caps			
	Clamp size (ASME BPE)	ØA (mm)	Thickness B (mm)
	1/2" - 3/4"	25	5
	1" - 1-1/2"	50.5	6
	2"	64	7
	2-1/2"	77	7
	3"	91	7
	4"	119	9
	4-1/2"	130	9
	5"	144.4	9
	6"	167	9
	8"	217	9
10"	268	12	

Blank Caps - ordering code	
Clamp size	Ordering code
1/2" - 3/4" ASME BPE	CAP-050C
1" - 1-1/2" ASME BPE	CAP-100C
2" ASME BPE	CAP-200C
2-1/2" ASME BPE	CAP-250C
3" ASME BPE	CAP-300C
4" ASME BPE	CAP-400C
4-1/2" BS4825	CAP-450C
5" BS4825	CAP-500C
6" ASME BPE	CAP-600C
8" BS4825	CAP-800C
10" BS4825	CAP-1000C

Specification text

Staitech blank cap manufactured from 316L stainless steel. 1/2" - 3/4" ASME BPE clamp connection. Wetted surfaces finished to 0.5 microns Ra. External surfaces finished to 0.8 microns Ra (CAP-050C). For electropolished finish add suffix '-EP' (CAP-050C-EP).

Threaded Blank Caps - ordering code			
Clamp size (ASME BPE)	Thread size (BSP parallel)		
	1/8"	1/4"	3/8"
1/2" - 3/4"	CAP-050C-0125GF	CAP-050C-025GF	-
1" - 1-1/2"	CAP-100C-0125GF	CAP-100C-025GF	CAP-100C-0375GF
2"	CAP-200C-0125GF	CAP-200C-025GF	CAP-200C-0375GF
2-1/2"	CAP-250C-0125GF	CAP-250C-025GF	CAP-250C-0375GF
3"	CAP-300C-0125GF	CAP-300C-025GF	CAP-300C-0375GF
4"	CAP-400C-0125GF	CAP-400C-025GF	CAP-400C-0375GF

Specification text

Staitech threaded blank cap manufactured from 316L stainless steel. 1/2" - 3/4" ASME BPE clamp connection and 1/8" BSP parallel thread. Wetted surfaces finished to 0.5 microns Ra. External surfaces finished to 0.8 microns Ra (CAP-050C-0125GF). For electropolished finish add suffix '-EP' (CAP-050C-0125GF-EP).