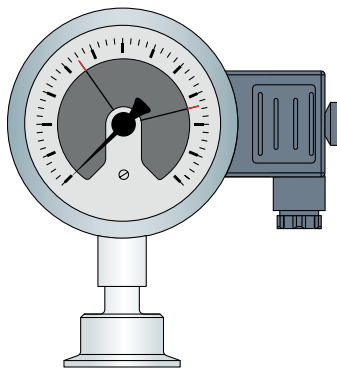
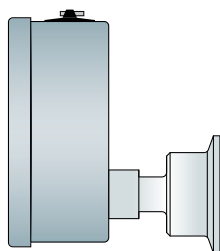




The 232.50 DS range of pressure gauges are offered with 63, 100 and 160mm dials and a range of diaphragm seal connections to match ASME BPE clamp fittings. Gauges can be supplied with dry case (232.50) or with Glycerine damping fill (233.50). All gauges are serialised to simplify traceability.



With electrical contacts



Back entry option

P Pressure Rating
Steady - full indicated pressure range
Fluctuating - 90% of indicated pressure range
Short periods - 130% of indicated pressure range

T Temperature Rating
Dry case - 200°C
Glycerine filled case - 80°C
(130°C for short periods during SIP)

Connections
Bottom, side or back entry
1" - 3" ASME BPE clamp

Design Parameters
Accuracy class - 1.0
Thermal drift from 20°C: +0.4% of the indicated range for every 10°C increase in medium temperature

Standard Pressure Ranges
-1-0-3, -1-0-5, -1-0-9, 0-1, 0-2.5, 0-4, 0-6, 0-10, 0-16, 0-25

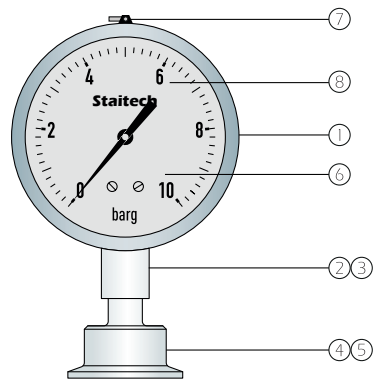
Surface Finish
Wetted diaphragm surfaces - 0.5 microns Ra
Case - satin finish better than 1.2 microns Ra

Options
Alternative pressure ranges
Enhanced surface finishes and electropolishing
Panel mount case with capillary and remote sensor
Safety pattern case
Electrical contact system
ATEX compliant gauges
Side entry cases

C Available Certification

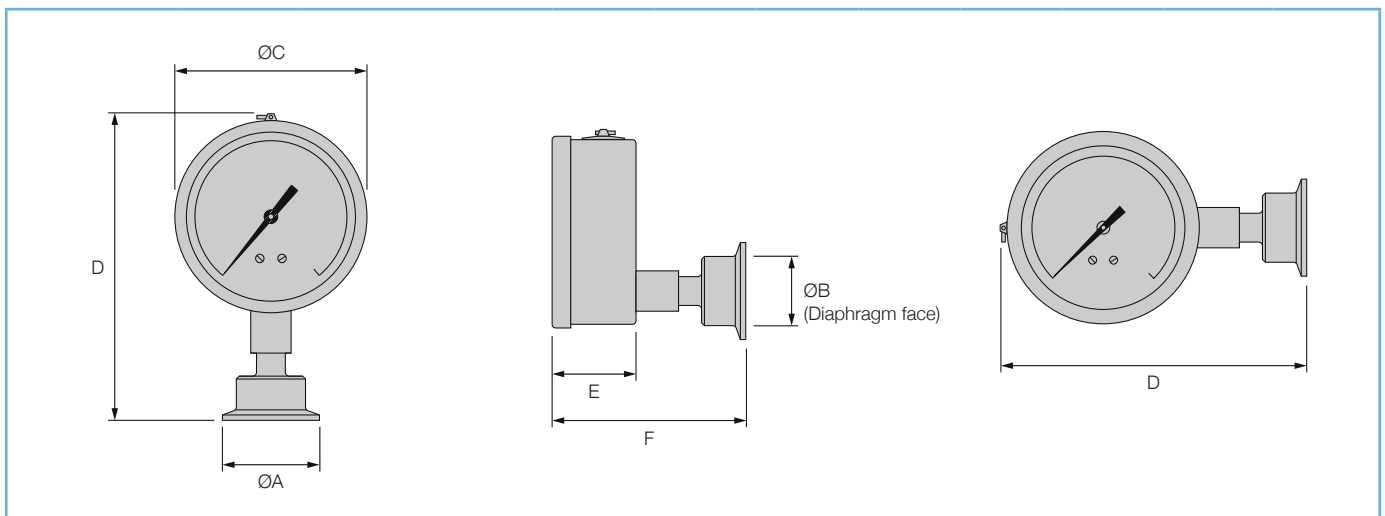
- CofC** Certificate of Conformity
- MTR's** Material Certification
- FDA** FDA Elastomer compliance certificates
- ADI** Certified 'Animal Derived Ingredient' free
- CAL** Calibration Certification
- EXATEX** ATEX zone compliance certification

Supplier Partner
Staitech are a nominated partner of Wika, stocking and distributing the company's extensive range of mechanical and electronic pressure and temperature monitoring products. For further information on the Wika range visit the Staitech website or www.wika.co.uk



Part	Description
1	Case 304 stainless steel
2	Boss 316L stainless steel
3	Movement Stainless steel
4	Diaphragm assembly 316L stainless steel
5	System fill KN59 Neobee® M-20*
6	Lens Laminated safety glass
7	Vent plug Rubber
8	Case fill Glycerine or dry

*Neobee complies with FDA CFR 21 paragraphs 172.856 and 174.5



	Dial size	System fitting	Dimensions (mm)						Weight (kg)	
			ØA	ØB	ØC	D	E	F	Dry	Filled
	DN63	1" ASME BPE clamp	50.5	22						
		1-1/2" ASME BPE clamp	50.5	32						
		2" ASME BPE clamp	64	40	63	129	33	80	0.2	0.3
		2-1/2" ASME BPE clamp	77	52						
		3" ASME BPE clamp	91	72						
	DN100	1" ASME BPE clamp	50.5	22						
		1-1/2" ASME BPE clamp	50.5	32						
		2" ASME BPE clamp	64	40	101	170	48	104	0.7	0.85
		2-1/2" ASME BPE clamp	77	52						
		3" ASME BPE clamp	91	72						
	DN160	1" ASME BPE clamp	50.5	22						
		1-1/2" ASME BPE clamp	50.5	32						
		2" ASME BPE clamp	64	40	161	230	48	104	1.1	1.5
		2-1/2" ASME BPE clamp	77	52						
		3" ASME BPE clamp	91	72						



Packaging

Individually capped and boxed



Service Parts

No service parts are available for this range



Specification

See product selector sheet for specification and ordering detail

Staitech

Staitech Ltd · PO Box 152 · Stroud
Glos · GL6 8YT · UK

Tel: +44 (0) 1543 882736 · Fax: +44 (0) 1543 882744

E-mail: sales@staitech.com · Web: www.staitech.com

Specifications subject to change without notice. 232.50DS-TB - 10/19