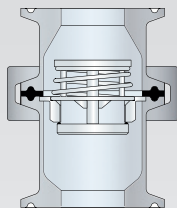


HCV04 CHECK VALVE

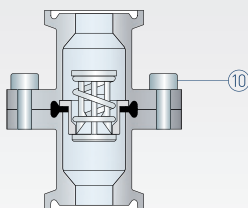


HCV04 The HCV04 range is ideally suited to steam, condensate and process fluid applications. Standard valves have metal-metal seating and a choice of 8 or 35 mbar opening pressure. A range of soft seat options are also available. Wetted surfaces on all valves are finished to 0.5 microns Ra. 1/2" to 1" valves are available in either standard or high capacity configuration. The HCV04 is also suitable for use as an anti-vacuum valve or pressure relief valve device.

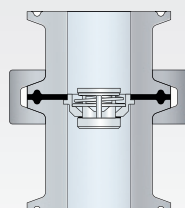
P Pressure Rating	Up to 10 barg
T Temperature Rating	Up to 200°C with metal-metal seating Up to 200°C with Viton, Silicone or Perlast seat seal Up to 150°C with EPDM seat seal
C Connections	1/2" - 4" ASME BPE clamp fittings DN8 - DN50 DIN and ISO clamp fittings
S Seal Material	Body seal - PTFE-Viton envelope Standard valves have metal-metal seating Optional body and seat seal - EPDM, Viton, Silicone or Perlast
W Opening Pressure	8 or 35 mbar
Surface Finish	Wetted surfaces - 0.5 microns Ra External surfaces - 0.8 microns Ra
Options	Eccentric versions DIN and ISO clamp and weld end connections Weld end connections Electropolished finish
C Certification	Certificate of Conformity Material Certification FDA Elastomer compliance certificates USP Elastomer compliance certificates Certified 'Animal Derived Ingredient' free



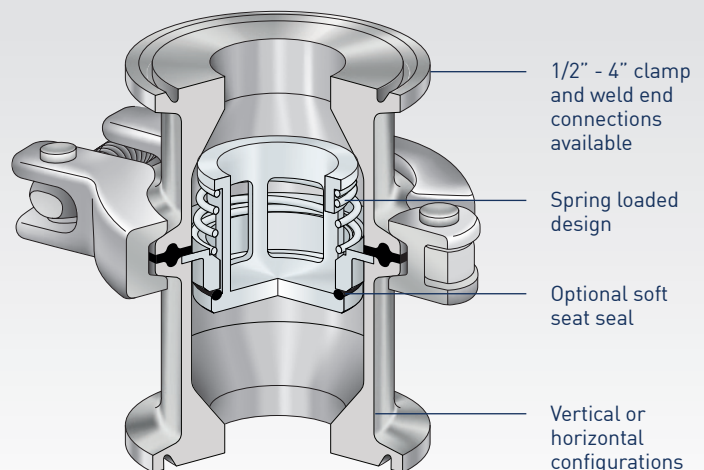
1/2", 3/4" and 1" HCV04HC

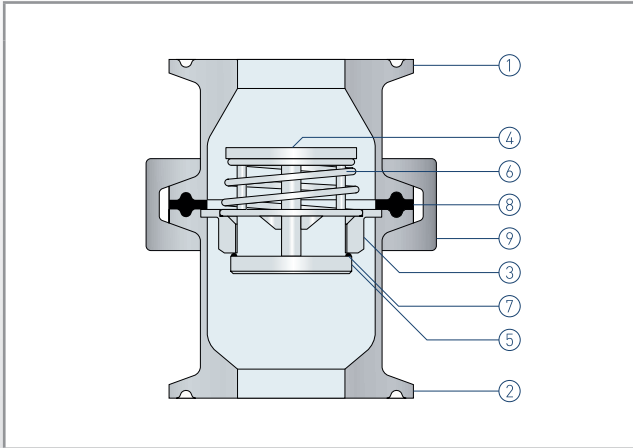


1/2" and 3/4" HCV04SC
(clamp centre units also available)



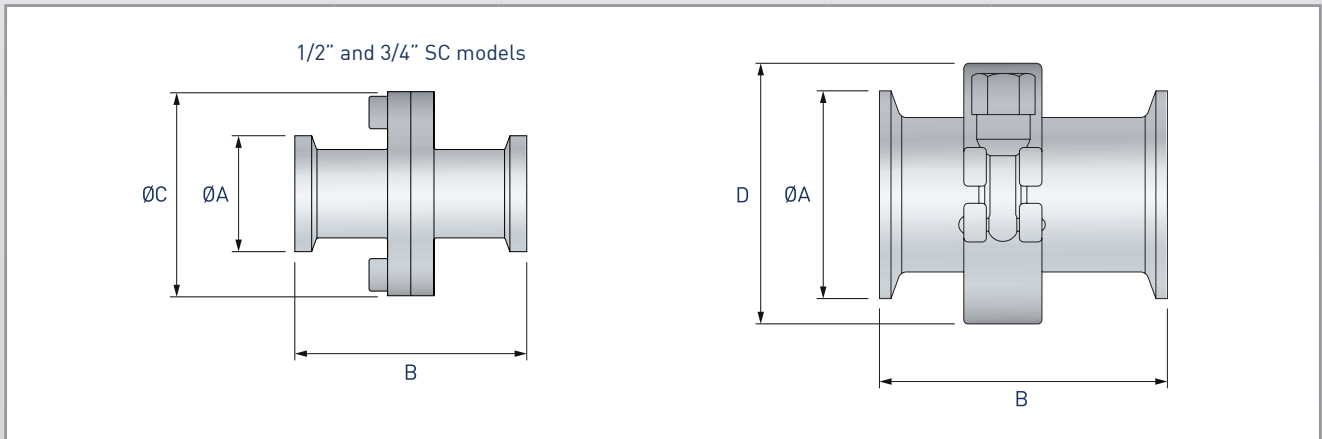
1" HCV04SC,
1-1/2" - 4" HCV04





Part	Description	
1	Inlet body	316L stainless steel
2	Outlet body	316L stainless steel
3	Cartridge valve body	316L stainless steel
4	Cartridge valve piston	316L stainless steel
5	Cartridge valve head	316L stainless steel
6	Cartridge valve spring	316 stainless steel
7	Optional seat seal	EPDM, Viton, Silicone or Perlast
8	Body seal	PTFE-Viton envelope
9	Body clamp	304 stainless steel
10	Body screw*	Stainless steel

*See illustration on page 1



Size ASME BPE	Dimensions (mm)				Drainable in horizontal	Kv(m ³ /h)	Weight (kg)
	ØA	B	ØC	D			
1/2" SC	25	50	44	-	×	2	0.15
1/2" HC	25	80	-	60	×	4	0.5
3/4" SC	25	50	44	-	✓	2	0.15
3/4" HC	25	80	-	60	×	4	0.5
1" SC	50.5	70	-	60	✓	4	0.5
1" HC	50.5	70	-	60	×	8	0.5
1-1/2"	50.5	80	-	60	✓	8	0.65
2"	64	80	-	78	✓	18	0.75
2-1/2"	77.5	80	-	120	✓	32	1.1
3"	91	80	-	135	✓	60	1.3
4"	119	115	-	180	✓	109	1.5

For DIN and ISO dimensions see sheet 4

	Flow	Effect on opening pressure due to valve orientation (mbar)							
		1/2"	3/4"	1"	1-1/2"	2"	2-1/2"	3"	4"
08 mbar spring	↔	0	0	0	0	0	0	0	0
	↑	+4	+4	+4	+4	+4	+4	+5	+7
	↓	-4	-4	*	*	*	*	*	*
35 mbar spring	↑	+4	+4	+4	+4	+4	+5	+5	+7
	↓	-4	-4	-4	-4	-4	-5	-5	-7

*Valves not suitable for orientation with with flow downward when fitted with 8 mbar spring

Service Parts - Seal kit comprising part 7 and 8

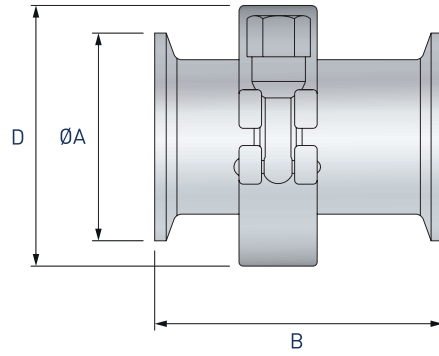
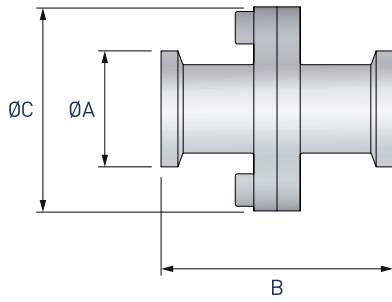
Staitech

Unit 6, Canal Iron Works, Hope Mill Lane,
Brimscombe, Stroud, GL5 2SH, UK

T. +44 (0) 1453 882736 / sales@staitech.com / www.staitech.com

HCV04 ASME BPE connections - ordering code									
Product		Size		Connection		Seat seal		Spring	
	-				-		-		
Standard capacity		1/2" ASME BPE	050	Clamp	C	Metal	M	8 mbar	08
HCV04SC		3/4" ASME BPE	075	Weld	W	EPDM	EBKU	35 mbar	35
		1" ASME BPE	100			Viton	VBKU		
High capacity		1/2" ASME BPE	050			Silicone	SW		
HCV04HC		3/4" ASME BPE	075			Perlast	P		
		1" ASME BPE	100						
HCV04		1-1/2" ASME BPE	150						
		2" ASME BPE	200						
		2-1/2" ASME BPE	250						
		3" ASME BPE	300						
		4" ASME BPE	400						
Example									
HCV04	-	150C		-		M	-	08	
Specification text									
<p>Staitech HCV04 check valve manufactured in 316L stainless steel with PTFE-Viton body seal. 1-1/2" ASME BPE clamp connection. Metal-metal seating. 8 mbar spring. Wetted surfaces finished to 0.5 microns Ra. External surfaces finished to 0.8 microns Ra. (HCV04-150C-M-08). For electropolished finish add suffix '-EP' (HCV04-150C-M-08-EP).</p>									

DN8SC and DN10SC models



Size DIN	Dimensions (mm)				Kv(m ³ /h)	Weight (kg)
	ØA	B	ØC	D		
DN8SC & DN10SC	34	50	44	-	2	0.15
	25	50	44	-	2	0.15
DN10HC	34	80	-	60	4	0.5
	25	80	-	60	4	0.5
DN15	34	80	-	60	4	0.5
	25	80	-	60	4	0.5
DN20	34	80	-	60	4	0.5
DN25SC	50.5	70	-	60	4	0.5
DN25HC	50.5	70	-	60	8	0.5
DN32	50.5	70	-	60	8	0.5
DN40	50.5	80	-	60	8	0.65
DN50	64	80	-	78	18	0.75

Note - larger sizes available upon request

Size ISO	Dimensions (mm)				Kv(m ³ /h)	Weight (kg)
	ØA	B	ØC	D		
DN8SC & DN10SC	25	50	40	-	2	0.15
DN8HC & DN10HC	25	70	-	60	4	0.15
DN15	34	70	-	60	4	0.5
	50.5	70	-	60	4	0.5
DN20SC	50.5	70	-	60	4	0.5
DN20HC	50.5	70	-	60	8	0.5
DN25	50.5	70	-	60	8	0.5
DN32	64	80	-	78	8	0.65
DN40	40	80	-	78	18	0.75

Note - larger sizes available upon request

Note - for DIN and ISO ordering codes consult Staitech

HCV04 DIN connections - ordering code									
Product		Connection		Size		Seat seal		Spring	
	-		-		-		-		
Standard capacity		Clamp	C	DIN DN8	34.0-8.0	Metal	M	8 mbar	08
HCV04SC		Weld	W		25.0-8.0		EPDM		EBKU
				DIN DN10	34.0-10.0	Viton	VBKU		
					25.0-10.0		Silicone	SW	
High capacity		Clamp	C	DIN DN10	34.0-10.0	Perlast	P		
HCV04HC		Weld	W		25.0-10.0				
HCV04		Clamp	C	DIN DN15	34.0-15.0				
		Weld	W		25.0-15.0				
				DIN DN20	34.0-20.0				
					25.0-20.0				
				DIN DN25	50.5-25.0				
				DIN DN32	50.5-32.0				
				DIN DN40	50.5-38.0				
				DIN DN50	64.0-50.0				
Example									
HCV04SC	-	C	-	34.0-8.0	-	M	-	08	
Specification text									
Staitech HCV04SC check valve manufactured in 316L stainless steel with PTFE-Viton body seal. DIN DN8 clamp connection. Metal-metal seating. 8 mbar spring. Wetted surfaces finished to 0.5 microns Ra. External surfaces finished to 0.8 microns Ra. (HCV04-C-34.0-8.0-M-08). For electropolished finish add suffix '-EP' (HCV04-C-34.0-8.0-M-08-EP).									

HCV04 ISO connections - ordering code									
Product		Connection		Size		Seat seal		Spring	
	-		-		-		-		
Standard capacity		Clamp	C	ISO DN8	25.0-10.3	Metal	M	8 mbar	08
HCV04SC		Weld	W		ISO DN10		25.0-14.0		EPDM
				ISO DN20	50.5-23.7	Viton	VBKU		
High capacity		Clamp	C	ISO DN8	25.0-10.3	Silicone	SW		
HCV04HC		Weld	W		ISO DN10		25.0-14.0	Perlast	P
				ISO DN20	50.5-23.7				
HCV04		Clamp	C	ISO DN15	34.0-18.1				
		Weld	W		50.5-18.1				
				ISO DN20	50.5-23.7				
				ISO DN25	50.5-29.7				
				ISO DN32	64.0-38.4				
				ISO DN40	64.0-44.3				
Example									
HCV04HC	-	C	-	25.0-10.3	-	M	-	08	
Specification text									
Staitech HCV04HC check valve manufactured in 316L stainless steel with PTFE-Viton body seal. ISO DN8 clamp connection. Metal-metal seating. 8 mbar spring. Wetted surfaces finished to 0.5 microns Ra. External surfaces finished to 0.8 microns Ra. (HCV04HC-C-25.0-10.3-M-08). For electropolished finish add suffix '-EP' (HCV04HC-C-25.0-10.3-M-08-EP).									