

# HST20 STEAM TRAP



**HST20** The HST20 range of steam traps are designed to remove condensate from steam systems where a lower level of surface finish can be accepted. A thermostatic element is used to detect the difference between the temperature of the cooling condensate and the system operating temperature. When this temperature differential exceeds 3-5°C the element contracts to allow the cooling condensate to exhaust. Being a temperature sensitive device, the HST20 also ensures that air is purged from a steam system together with waste condensate. Typical applications for the HST20 are steam main drainage, Steam-in-Place (SIP) applications and when inverted, as a steam system air vent. The HST20 is available with either clamped (HST20) or screwed (HST20S) body joint.

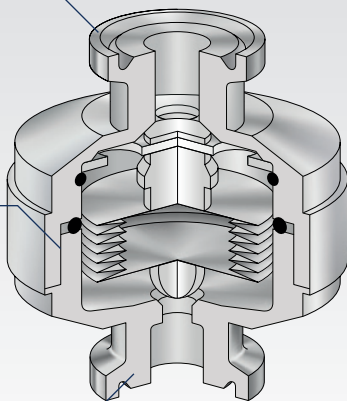
<b>P Pressure Rating</b>	Maximum operating pressure (PMO) - 6 barg Maximum allowable pressure (PMA) - 8 barg																					
<b>T Temperature Rating</b>	Maximum allowable temperature (TMA) - 170°C																					
<b>Connections</b>	1/4" - 1-1/2" ASME BPE clamp or weld end 1/2" and 3/4" compression fittings DN8, 10, 15, 20, 25 ISO and DIN clamp or weld end																					
<b>Flow Capacity</b>	<table border="1"> <tr> <td>Pressure (bar)</td> <td>1.0</td> <td>2.0</td> <td>3.0</td> <td>4.0</td> <td>5.0</td> <td>6.0</td> </tr> <tr> <td>Flow (kg/h)</td> <td>200</td> <td>350</td> <td>400</td> <td>650</td> <td>800</td> <td>950</td> </tr> <tr> <td>Cold flow (kg/h)</td> <td>700</td> <td>900</td> <td>1000</td> <td>1200</td> <td>1500</td> <td>1600</td> </tr> </table>	Pressure (bar)	1.0	2.0	3.0	4.0	5.0	6.0	Flow (kg/h)	200	350	400	650	800	950	Cold flow (kg/h)	700	900	1000	1200	1500	1600
Pressure (bar)	1.0	2.0	3.0	4.0	5.0	6.0																
Flow (kg/h)	200	350	400	650	800	950																
Cold flow (kg/h)	700	900	1000	1200	1500	1600																
<b>Surface Finish</b>	Wetted surfaces - 0.8 microns Ra (SF3) External surfaces - 1.0 micron Ra																					
<b>Options</b>	Bolted body joint - HST20 Screwed body joint - HST20S Screwed connections Fixed bleed																					
<b>Certification</b>	Certificate of conformity Material certification FDA Elastomer compliance certificate USP Elastomer compliance certificate Certified 'Animal derived ingredient' free																					

- ★ Features**
- Manufactured from solid bar without welding
  - Compact design for inclusion on skids - HST20SC
  - Wide range of connection types and sizes
  - Easy to maintain
  - Cost effective solution suitable for the majority of trapping applications

ASME BPE, ISO and DIN connections available

Two body joint options (HST20)

316L stainless steel body and end fittings



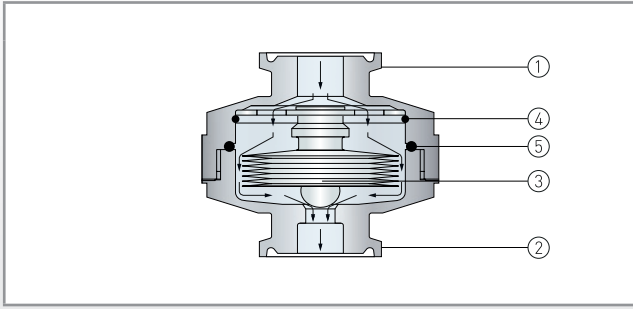
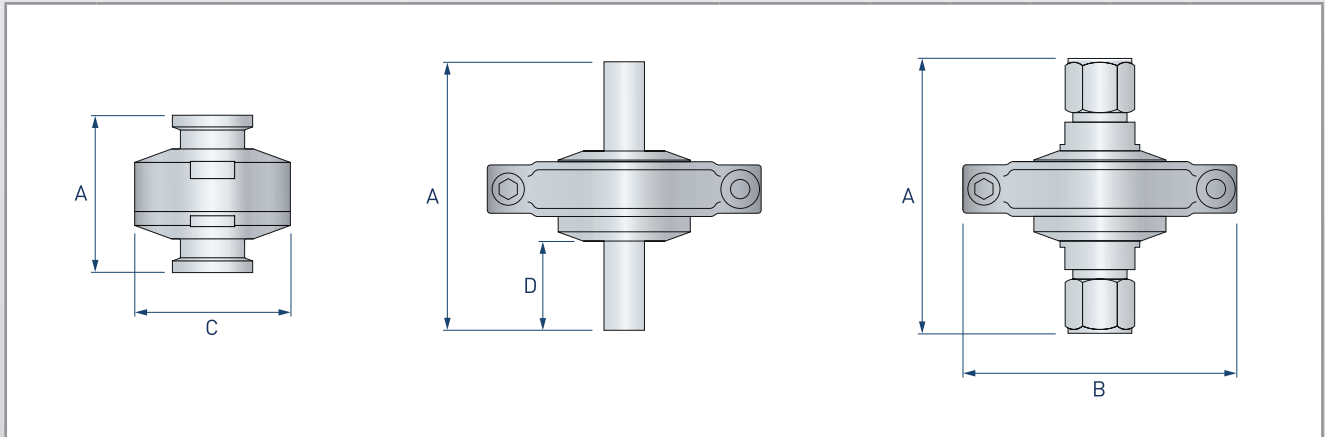


Illustration showing HST20SC

Part	Description	
1	Inlet connection	316L stainless steel
2	Outlet connection	316L stainless steel
3	Element assembly	316/316L stainless steel
4	Element retainer	316 Stainless steel
5	Seal HST20	PTFE-Viton envelope
	Seal HST20S	FEP-Viton
6*	Body clamp	304 stainless steel

\*Used on HST20 only



Model	ASME BPE ISO DIN	1/2"	3/4"	1"	1-1/2"	Dimensions (mm)				Weight (kg)
		DN8 and DN10 DN8 and DN10*	DN15 DN15*	DN20 DN20* and DN25	DN25 DN32	A	B	C	D	
HST20SC		✓	✓	✓	✓	49	-	48.5	-	0.3
		✓	✓	✓		82	-	48.5	28	0.4
		✓	✓			82	-	48.5	-	0.4
HST20		✓	✓	✓	✓	49	85	-	-	0.3
		✓	✓	✓		82	85	-	28	0.4
		✓	✓			82	85	-	-	0.4

\*ISO DN15, DIN DN8 - DN20 available with 25mm or 34mm clamp connections. ISO DN15 available with 34mm or 50.5mm clamp connections

**Service Parts** - Element assembly (3), element retainer (4) and body seal (5)