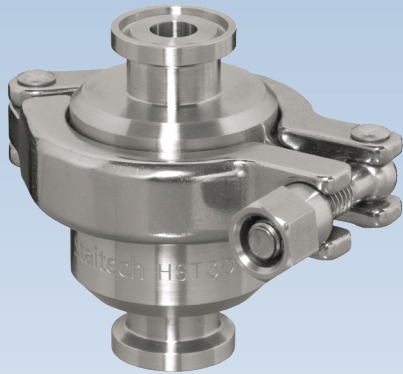


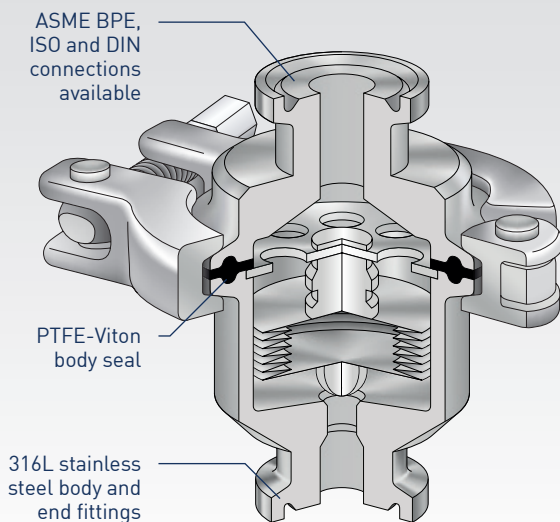
# HST30TC STEAM TRAP



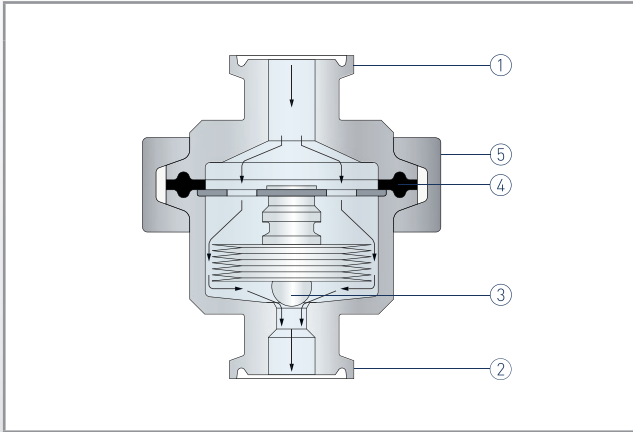
## HST30TC

The HST30TC range of steam traps are designed to remove condensate from high purity steam systems. A thermostatic element is used to detect the difference between the temperature of the cooling condensate and the system operating temperature. When this temperature differential exceeds 3-5°C the element contracts to allow the cooling condensate to exhaust. Being a temperature sensitive device, the HST30TC also ensures that air is purged from a steam system together with waste condensate. Typical applications for the HST30TC are steam main drainage, Steam-in Place(SIP) applications and when inverted, as a steam system air vent. Where a bolted body joint is preferred over clamped configuration the HST30 model is available.

<b>P Pressure Rating</b>	Maximum operating pressure (PMO) - 6 barg Maximum allowable pressure (PMA) - 8 barg																					
<b>T Temperature Rating</b>	Maximum allowable temperature (TMA) - 170°C																					
<b>I Connections</b>	1/4" - 1-1/2" ASME BPE clamp or weld end DN8, 10, 15, 20, 25 ISO and DIN clamp or weld end																					
<b>Wetted Parts</b>	316L stainless steel																					
<b>Seal Material</b>	PTFE-Viton																					
<b>Flow Capacity</b>	<table border="1"> <tr> <td>Pressure (bar)</td> <td>1.0</td> <td>2.0</td> <td>3.0</td> <td>4.0</td> <td>5.0</td> <td>6.0</td> </tr> <tr> <td>Flow (kg/h)</td> <td>200</td> <td>350</td> <td>400</td> <td>650</td> <td>800</td> <td>950</td> </tr> <tr> <td>Cold flow (kg/h)</td> <td>700</td> <td>900</td> <td>1000</td> <td>1200</td> <td>1500</td> <td>1600</td> </tr> </table>	Pressure (bar)	1.0	2.0	3.0	4.0	5.0	6.0	Flow (kg/h)	200	350	400	650	800	950	Cold flow (kg/h)	700	900	1000	1200	1500	1600
Pressure (bar)	1.0	2.0	3.0	4.0	5.0	6.0																
Flow (kg/h)	200	350	400	650	800	950																
Cold flow (kg/h)	700	900	1000	1200	1500	1600																
<b>Surface Finish</b>	Wetted surfaces - 0.5 microns Ra (SF1) External surfaces - 0.8 microns Ra																					
<b>Options</b>	Body clamp with wing nut Horizontal inlet connection Bolted body joint - HST30 Low ferrite stainless steel (WN1.4435) Fixed bleed Electropolished finish (SF4)																					
<b>Certification</b>	Certificate of conformity Material certification FDA Elastomer compliance certificates USP Elastomer compliance certificates Certified 'Animal derived ingredient' free																					
<b>Features</b>	<ul style="list-style-type: none"> <li>Clamped body - allows easy disassembly for cleaning and servicing</li> <li>Wide range of connection types and sizes</li> <li>Optional finishes available - SF1 and SF4</li> <li>Simple to maintain</li> <li>Industry standard face-face dimension</li> </ul>																					

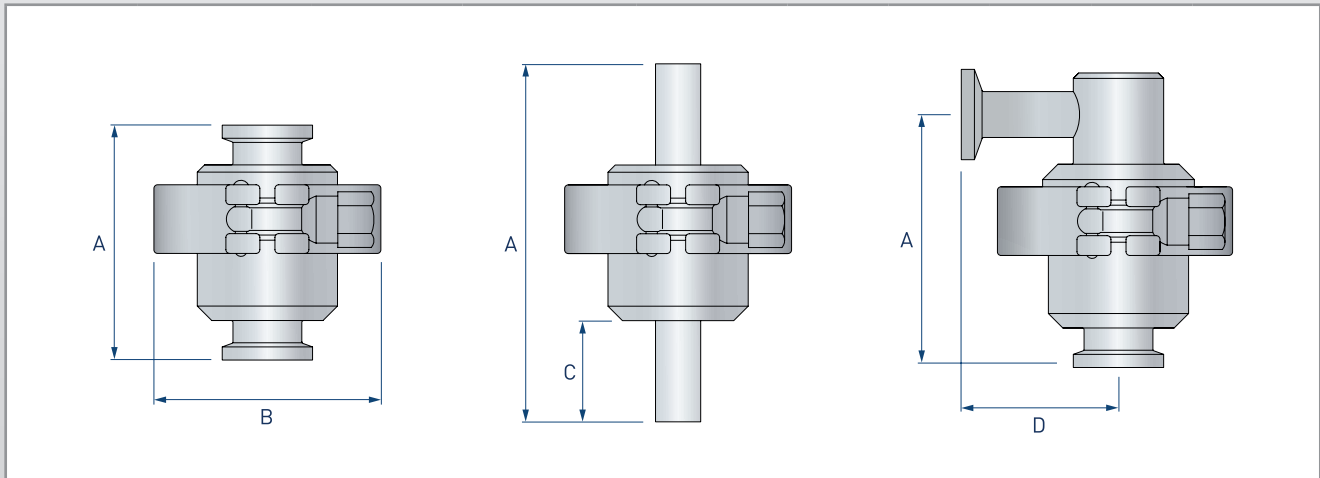


# HST30TC STEAM TRAP



Part	Description	
1	Inlet connection	316L stainless steel
2	Outlet connection	316L stainless steel
3	Element assembly	316/316L stainless steel
4	Seal*	PTFE-Viton envelope
5	Body clamp	Stainless steel

\*Body seal is FDA and USP (121°C) compliant.



ASME BPE ISO DIN	1/2"	3/4"	1"	1-1/2"	Dimensions (mm)				Weight (kg)
	DN8 and DN10 DN8 and DN10*	DN15* DN15*	DN20 DN20* and DN25	DN25 DN32	A	B	C	D	
	✓	✓	✓	✓	65	60	-	-	0.5
	✓	✓	✓		98	60	28	-	0.5
	✓	✓			70	60	-	43	0.5
			✓		77	60	-	50	0.6

\*ISO DN15, DIN DN8 - DN20 available with 25mm or 34mm clamp connections. ISO DN15 available with 34mm or 50.5mm clamp connections

**Service Parts** - Element assembly (3) and body seal (4)

ASME BPE part number ordering key						
Product		Size		Connections		Options
	-				-	
Vertical connections HST30TC		1/2" ASME BPE 3/4" ASME BPE 1" ASME BPE 1-1/2" ASME BPE	050 075 100 150	Clamp Weld	C W	Electropolishing EP
Horizontal inlet HST30TCH		1/2" ASME BPE 3/4" ASME BPE 1" ASME BPE	050 075 100			
Example						
<b>HST30TC</b>	<b>-</b>		<b>050C</b>		<b>-</b>	<b>EP</b>
Specification text						
Staitech HST30TC steam trap manufactured from 316L stainless steel with PTFE-Viton FDA and USP Class VI compliant body seal. 1/2" ASME BPE clamp connections. Wetted surfaces finished to 0.5 microns Ra and electropolished. External surfaces finished to 0.8 microns Ra. (HST30TC-050C). For electropolished finish add suffix '-EP' (HST30TC-050C-EP).						

DIN part number ordering key									
Product		Connections		Size		Options			
	-		-		-				
Vertical connections HST30TC		Clamp C		DIN DN8	34.0-8.0 25.0-8.0	Electropolishing EP			
Horizontal inlet HST30TCH				DIN DN10	34.0-10.0 25.0-10.0				
				DIN DN15	34.0-15.0 25.0-15.0				
				DIN DN15	34.0-16.0 25.0-16.0				
				DIN DN20	34.0-20.0 50.5-20.0				
				DIN DN25	50.5-25.0				
Vertical connections HST30TC				Weld W			DIN DN8	10.0-8.0	
Horizontal inlet HST30TCH							DIN DN10	12.0-10.0 13.0-10.0	
							DIN DN15	18.0-15.0 18.0-16.0	
							DIN DN20	23.0-20.0	
		DIN DN25	28.0-25.0						
			29.0-26.0						
Example									
<b>HST30TC</b>	<b>-</b>	<b>C</b>	<b>-</b>	<b>34.0-8.0</b>	<b>-</b>	<b>EP</b>			
Specification text									
Staitech HST30TC steam trap manufactured from 316L stainless steel with PTFE-Viton FDA and USP Class VI compliant body seal. DIN DN8 34mm clamp connections. Wetted surfaces finished to 0.5 microns Ra and electropolished. External surfaces finished to 0.8 microns Ra. (HST30TC-C-34.0-8.0). For electropolished finish add suffix '-EP' (HST30TC-C-34.0-8.0-EP).									

ISO part number ordering key						
Product		Connection		Size		
	-		-		-	
Vertical connections		Clamp	<b>C</b>	ISO DN8	25.0-10.3	Electropolishing
HST30TC				ISO DN10	25.0-14.0	<b>EP</b>
Horizontal inlet				ISO DN15	34.0-18.1	
HST30TCH				ISO DN20	50.5-23.7	
Vertical connections		Weld	<b>W</b>	ISO DN8	13.5-10.3	
HST30TC				ISO DN10	17.2-14.0	
Horizontal inlet				ISO DN15	21.3-18.1	
HST30TCH				ISO DN20	26.9-23.7	
Example						
<b>HST30TC</b>	<b>-</b>	<b>C</b>	<b>-</b>	<b>25.0-10.3</b>	<b>-</b>	<b>EP</b>

**Specification text**

Staitech **HST30TC steam trap** manufactured from 316L stainless steel with PTFE-Viton FDA and USP Class VI compliant body seal. **ISO DN8 25mm clamp** connections. Wetted surfaces finished to 0.5 microns Ra and electropolished. External surfaces finished to 0.8 microns Ra. (HST30TC-C-25.0-10.3). For electropolished finish add suffix '-EP' (HST30TC-C-25.0-10.3-EP).