

ORIFICE SPOOLS



ORIFICE SPOOLS

Orifice spools are available in two designs from Staitech. The OP1 is a square edge design where the face of the orifice has a flat profile. The OP2 is a conical design that utilises a tapered profile to reduce the bore to the orifice size. The OP1 and OP2 designs are manufactured from 316L stainless steel with wetted surfaces finished to 0.5 microns Ra. Both types are supplied solid for drilling on site or by Staitech.

Connections To suit 1/2" - 3" ASME BPE clamp fittings

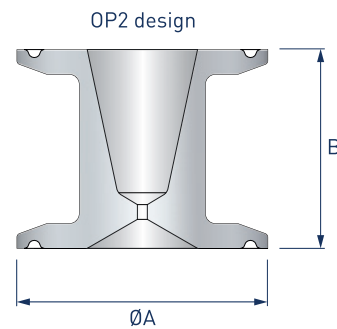
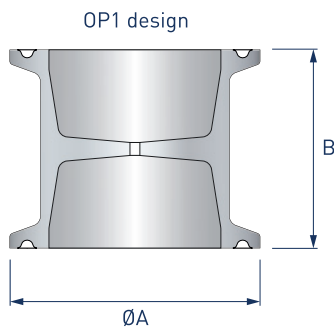
Material 316L stainless steel

Surface Finish Wetted surfaces - 0.5 microns Ra (SF1)
External surfaces - 0.8 microns Ra

Options 4" and larger sizes
ISO and DIN clamp sizes
Low ferrite stainless steel (WN1.4435),
C22 and other alloys
Electropolished finish (SF4)

Certification Certificate of conformity
Material certification
Certified 'Animal derived ingredient' free

Orifice Spools



Clamp size (ASME BPE)	ØA (mm)	B (mm)	Weight (kg)
1/2"	25	40	0.10
3/4"	25	40	0.10
1"	50.5	40	0.15
1-1/2"	50.5	40	0.18
2"	64	50	0.35
2-1/2"	71.5	50	0.40
3"	91	50	0.45

Orifice Machining - All orifice spools are supplied undrilled as standard. Staitech offer a machining service to cover both orifice designs. The OP1 design can be machined with both concentric and eccentric holes. The OP2 design is available with concentric hole only.

Orifice Spools - ordering code		
Clamp size (ASME BPE)	OP1 square edge design	OP2 conical design
1/2"	OP1-050C	OP2-050C
3/4"	OP1-075C	OP2-075C
1"	OP1-100C	OP2-100C
1-1/2"	OP1-150C	OP2-150C
2"	OP1-200C	OP2-200C
2-1/2"	OP1-250C	OP2-250C
3"	OP1-300C	OP2-300C

Specification text

Staitech OP1 square edge orifice spool manufactured from 316L stainless steel. 1/2" ASME BPE clamp connections. Wetted surfaces finished to 0.5 microns Ra. External surfaces finished to 0.8 microns Ra. (OP1-050C). For electropolished finish add suffix '-EP' (OP1-050C-EP).

Orifice machining

For a concentric hole add suffix '-C' followed by the hole size in mm. (OP1-050C-C-5.0, OP1-050C-C-5.0-EP if electropolished).
For an eccentric hole add the suffix '-E' followed by the hole size in mm. (OP1-050C-E-5.0, OP1-050C-E-5.0-EP if electropolished).