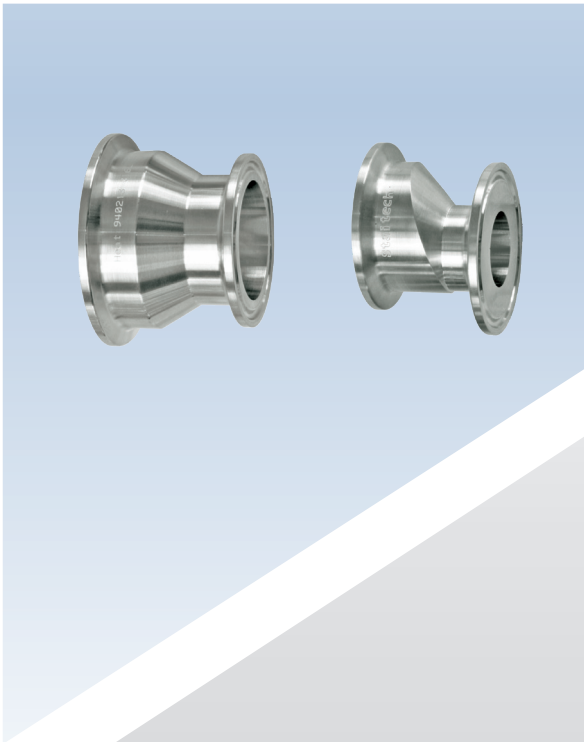


REDUCERS CLAMP CONNECTIONS



REDUCERS

Concentric and eccentric clamp end reducers have a tapered bore to ensure a smooth transition between bore sizes. Reducers are manufactured from 316L stainless steel with wetted surfaces and finished to 0.5 microns Ra. Whilst most sizes are machined from bar, larger sizes of eccentric reducer are fabricated in accordance with ASME BPE standard.

Connections	To suit 1/2" - 3" ASME clamp fittings
Material	316L stainless steel
Surface Finish	Wetted surfaces - 0.5 microns Ra (SF1) External surfaces - 0.8 microns Ra
Options	ISO and DIN clamp sizes ASME BPE compliant weld end reducers Larger eccentric sizes Electropolished finish (SF4)
Certification	Certificate of conformity Material certification Certified 'Animal derived ingredient' free

Concentric Reducers

			End 2							Dimension B (mm)
	Size		1/2"	3/4"	1"	1-1/2"	2"	2-1/2"	3"	
	ØA		25	25	50.5	50.5	64	77.5	91	
End 1	3/4"	25	40	-	-	-	-	-	-	-
	1"	50.5	40	40	-	-	-	-	-	-
	1-1/2"	50.5	40	40	40	-	-	-	-	-
	2"	64	60	60	45	45	-	-	-	-
	2-1/2"	77.5	55	55	45	45	45	-	-	-
	3"	91	75	75	60	60	60	60	-	-
	4"	119	80	80	80	80	80	80	80	-

Eccentric Reducers

			End 2					Dimension B (mm)	
	Size		1/2"	3/4"	1"	1-1/2"	2"		2-1/2"
	ØA		25	25	50.5	50.5	64		77.5
End 1	3/4"	25	40	-	-	-	-	-	
	1"	50.5	40	40	-	-	-	-	
	1-1/2"	50.5	40	40	40	-	-	-	
	2"	64	140	127	50	50	-	-	
	2-1/2"	77.5	190	178	178	127	76	-	
	3"	91	-	-	229	178	127	76	

Concentric Machined Reducers - ordering code					
End 1	3/4"	1"	1"	1-1/2"	1-1/2"
End 2	1/2"	1/2"	3/4"	1/2"	3/4"
	CREDM-075C-050C	CREDM-100C-050C	CREDM-100C-075C	CREDM-150C-050C	CREDM-150C-075C
End 1	1-1/2"	2"	2"	2"	2"
End 2	1"	1/2"	3/4"	1"	1-1/2"
	CREDM-150C-100C	CREDM-200C-050C	CREDM-200C-075C	CREDM-200C-100C	CREDM-200C-150C
End 1	2-1/2"	2-1/2"	2-1/2"	2-1/2"	2-1/2"
End 2	1/2"	3/4"	1"	1-1/2"	2"
	CREDM-250C-050C	CREDM-250C-075C	CREDM-250C-100C	CREDM-250C-150C	CREDM-250C-200C
End 1	3"	3"	3"	3"	3"
End 2	1/2"	3/4"	1"	1-1/2"	2"
	CREDM-300C-050C	CREDM-300C-075C	CREDM-300C-100C	CREDM-300C-150C	CREDM-300C-200C
End 1	3"	4"	4"	4"	4"
End 2	2-1/2"	1/2"	3/4"	1"	1-1/2"
	CREDM-300C-250C	CREDM-400C-050C	CREDM-400C-075C	CREDM-400C-100C	CREDM-400C-150C
End 1	4"	4"	4"	-	-
End 2	2"	2-1/2"	3"	-	-
	CREDM-400C-200C	CREDM-400C-250C	CREDM-400C-300C	-	-

Eccentric machined reducers - ordering code					
End 1	3/4"	1"	1"	1-1/2"	1-1/2"
End 2	1/2"	1/2"	3/4"	1/2"	3/4"
	EREDM-075C-050C	EREDM-100C-050C	EREDM-100C-075C	EREDM-150C-050C	EREDM-150C-075C
End 1	1-1/2"	2"	2"	-	-
End 2	1"	1"	1-1/2"	-	-
	EREDM-150C-100C	EREDM-200C-100C	EREDM-200C-150C	-	-

Eccentric Fabricated Reducers - ordering code					
End 1	2"	2"	2-1/2"	2-1/2"	2-1/2"
End 2	1/2"	3/4"	1/2"	3/4"	1"
	EREDF-200C-050C	EREDF-200C-075C	EREDF-250C-050C	EREDF-250C-075C	EREDF-250C-100C
End 1	2-1/2"	2-1/2"	3"	3"	3"
End 2	1-1/2"	2"	1"	1-1/2"	2"
	EREDF-250C-150C	EREDF-250C-200C	EREDF-300C-100C	EREDF-300C-150C	EREDF-300C-200C
End 1	3"	-	-	-	-
End 2	2-1/2"	-	-	-	-
	EREDF-300C-250C	-	-	-	-

Specification text

Staitech concentric machined reducer manufactured from 316L stainless steel. End 1 with 3/4" ASME BPE clamp connection. End 2 with 1/2" ASME BPE clamp connection. Wetted surfaces finished to 0.5 microns Ra. External surfaces finished to 0.8 microns Ra. (CREDM-075C-050C). For electropolished finish add suffix '-EP' (CREDM-075C-050C-EP).