



The SSH is a double bolted high pressure design that ensures optimum clamping force. Both stainless steel and brass nuts are available to suit individual customer preference. The main clamp halves are 304 stainless steel.



### Connections

To suit 1/2" - 6" ASME BPE clamp fittings



### Material

304 stainless steel



### Surface finish

All surfaces - Bright polish



### Options

Brass or stainless steel nuts

Larger sizes

Machining to suit ported gaskets

Machining to suit tabbed orifice plates

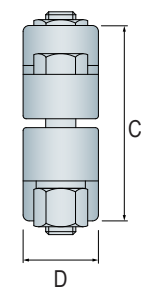
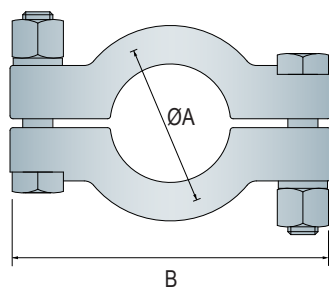


### Available certification

**CofC**

Certificate of Conformity

### SSH-Type dimensions



Clamp end (ASME BPE)	Max Pressure (bar at 150°C)	ØA (mm)	B (mm)	C (mm)	D (mm)
1/2" / 3/4"	75	25	65	35	16
1" / 1-1/2"	75	50.5	103	66	26
2"	75	64	113	77	26
2-1/2"	75	77.5	131	95	26
3"	60	91	137	110	26
4"	53	119	173	137	26
6"	45	167	240	185	26