

# TANK WELD FLANGES

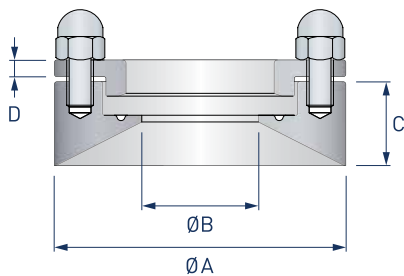


## TANK WELD FLANGES

Tank weld flanges allow the flush mounting of valves, sight glasses, gauges and other instrumentation on vessels and tanks. Fittings are available to mount clamp products from 1/2" to 4" in thicknesses to suit individual fabrication requirements. In addition to standard fittings a 'quick snap' system is also available with tank weld fittings. This design allows a connected item such as a hose to be decoupled without the need to loosen the four securing screws. Further information on this option is available upon request.

<b>Connections</b>	Flanges suitable for welding - 4 thickness options ASME BPE clamp connection to suit 1/2" - 4" fittings
<b>Material</b>	Body - Low sulphur BPE compliant 316L stainless steel Clamping rings - 316L stainless steel
<b>Thickness</b>	12mm (15mm for 2" - 4" sizes), 25mm, 38mm & 51mm
<b>Surface Finish</b>	Wetted surfaces - 0.5 microns Ra External surfaces - 1.6 microns Ra
<b>Options</b>	Quick snap disconnect system Electropolished finish C22 alloy and other materials Welding mandrels
<b>Certification</b>	Certificate of conformity Material certification Certified 'Animal derived ingredient' free

Tank Weld Flanges



Clamp end (ASME BPE)	ØA (mm)	ØB (mm)	C (mm)	D (mm)
1/2"	55	9.4	12, 25, 38 & 51	5.0
3/4"	55	15.8	12, 25, 38 & 51	5.0
1"	85	22.1	12, 25, 38 & 51	5.0
1-1/2"	85	34.8	12, 25, 38 & 51	5.0
2"	100	47.5	15, 25, 38 & 51	6.0
2-1/2"	112	60.2	15, 25, 38 & 51	9.5
3"	131	72.9	15, 25, 38 & 51	10.0
4"	170	97.4	15, 25, 38 & 51	12.0