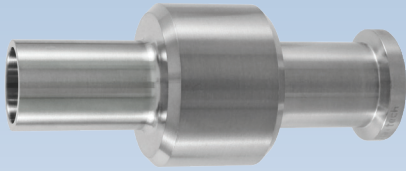


TRANSFER PANEL ADAPTORS



PANEL ADAPTORS

Transfer panel adaptors offer a robust solution for installations where tubing must pass between isolated areas or for general transfer panel applications. Fittings with clamp connections are manufactured from 316L stainless steel material. Fittings with weld end or mixed connections are manufactured from low sulphur 316L stainless steel complying with ASME BPE criteria. Wetted surfaces are finished to 0.5 microns Ra.

Connections	Clamp end to suit 1/2" - 3" ASME BPE fittings Tube end to suit 1/2" - 3" ASME BPE tube
Material	Clamp end options - 316L stainless steel Weld end options - 316L stainless steel (ASME BPE compliant)
Surface Finish	Wetted surfaces - 0.5 microns Ra (SF1) External surfaces - 0.8 microns Ra
Options	4" and larger sizes DIN and ISO sizes Low ferrite stainless steel (WN1.4435), C22 and other alloys Electropolished finish (SF4)
Certification	Certificate of conformity Material certification Certified 'Animal derived ingredient' free

Transfer Panel Adaptors						
	Clamp / tube size (ASME BPE)	A (mm)	B (mm)	C (mm)	ØD (mm)	ØE (mm)
	1/2"	20	25	25	29	29
	3/4"	24	28	28	35	35
	1"	24	28	28	41.5	51
	1-1/2"	24	28	28	54	54
	2"	24	28	28	67	67
	2-1/2"	24	28	28	79.5	79.5
	3"	24	28	28	92	92

Transfer Panel Adaptors - ordering code			
Size - (ASME BPE)	Weld ends	Clamp ends	Clamp x weld ends
1/2"	TPA-050WW	TPA-050CC	TPA-050CW
3/4"	TPA-075WW	TPA-075CC	TPA-075CW
1"	TPA-100WW	TPA-100CC	TPA-100CW
1-1/2"	TPA-150WW	TPA-150CC	TPA-150CW
2"	TPA-200WW	TPA-200CC	TPA-200CW
2-1/2"	TPA-250WW	TPA-250CC	TPA-250CW
3"	TPA-300WW	TPA-300CC	TPA-300CW

Specification text

Staitech transfer panel adaptor manufactured from 316L stainless steel. 1/2" ASME BPE weld connections. Wetted surfaces finished to 0.5 microns Ra. External surfaces finished to 0.8 microns Ra. (TPA-050WW). For electropolished finish add suffix '-EP' (TPA-050WW-EP).